

**TYPES**

- Type **A**: with thread, mounting from above
- Type **UA**: with groove, mounting from above
- Type **UB**: with groove, mounting from the front

Aluminium **AM**  
matte ground

Reference line  
laser-engraved, black colour

**FEATURES AND APPLICATIONS**

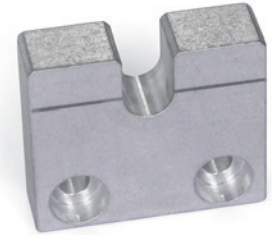
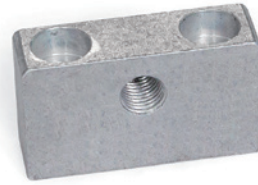
GN 828 bearing blocks are used in combination with the stainless steel adjusting screws GN 827 (see page -) for simple adjustment and positioning tasks.

For machining and assembly equipment where attachments and mechanisms need to be changed regularly, particularly simple adjustments can be achieved by combining the adjusting screws GN 827 (see page -) knurled nuts GN 827.1 (see page -) and bearing blocks GN 828 (see page -) of the types UA and UB to ensure that settings are retained even between uses.

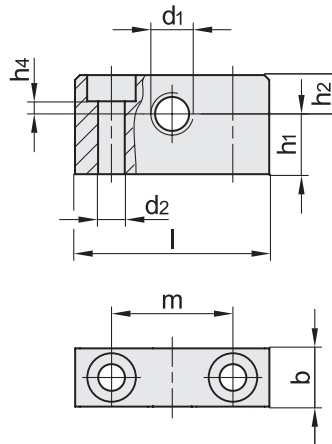
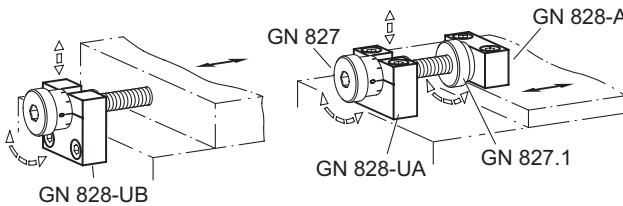
On the opposing part, type A or threading already present in the mounting plate can be used.

**ACCESSORIES**

- Stainless Steel-Adjusting screws GN 827 (see page -)
- Stainless Steel-Knurled nuts GN 827.1 (see page -)



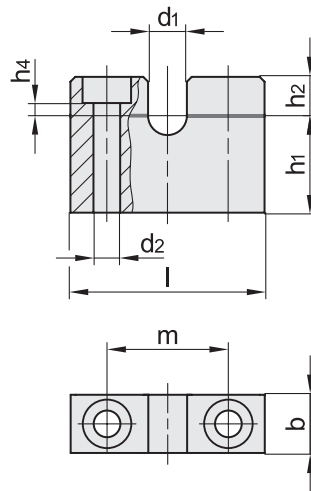
**Application examples**



**GN 828-A**

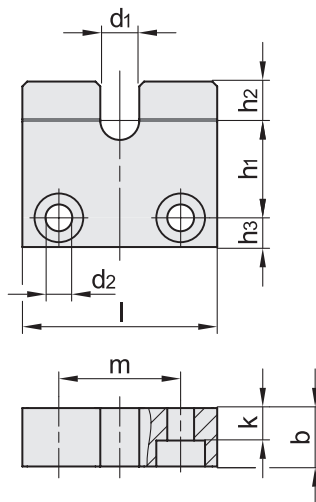
Code	Description	d1	d2	b h11	l	h1	h2	h4	m	△
GN.82151	GN 828-M6X1-A-5-AM	M6x1	4.5	10	35	5	6	1.6	22	8
GN.82152	GN 828-M6X1-A-10-AM	M6x1	4.5	10	35	10	6	1.6	22	12
GN.82153	GN 828-M6X1-A-20-AM	M6x1	4.5	10	35	20	6	1.6	22	21
GN.82156	GN 828-M8X1-A-8-AM	M8x1	5.5	12	40	8	8	2.6	25	16
GN.82157	GN 828-M8X1-A-15-AM	M8x1	5.5	12	40	15	8	2.6	25	24
GN.82158	GN 828-M8X1-A-20-AM	M8x1	5.5	12	40	20	8	2.6	25	30
GN.82161	GN 828-M10X1-A-10-AM	M10x1	6.5	15	45	10	10	3.6	30	28
GN.82162	GN 828-M10X1-A-20-AM	M10x1	6.5	15	45	20	10	3.6	30	44
GN.82163	GN 828-M10X1-A-30-AM	M10x1	6.5	15	45	30	10	3.6	30	60

Control elements



## GN 828-UA

Code	Description	$d_1 +0.6 +0.4$	$d_2$	$b_{h11}$	$l$	$h_1$	$h_2$	$h_4$	$m$	$\Delta$
GN.82051	GN 828-6-UA-10-AM	6	4.5	10	35	10	6	1.6	22	13
GN.82053	GN 828-6-UA-15-AM	6	4.5	10	35	15	6	1.6	22	17
GN.82055	GN 828-6-UA-25-AM	6	4.5	10	35	25	6	1.6	22	26
GN.82071	GN 828-8-UA-12-AM	8	5.5	12	40	12	8	2.6	25	20
GN.82073	GN 828-8-UA-20-AM	8	5.5	12	40	20	8	2.6	25	29
GN.82075	GN 828-8-UA-30-AM	8	5.5	12	40	30	8	2.6	25	41
GN.82091	GN 828-10-UA-15-AM	10	6.5	15	45	15	10	3.6	30	34
GN.82093	GN 828-10-UA-20-AM	10	6.5	15	45	20	10	3.6	30	42
GN.82095	GN 828-10-UA-30-AM	10	6.5	15	45	30	10	3.6	30	59



## GN 828-UB

Code	Description	$d_1 +0.6 +0.4$	$d_2$	$b_{h11}$	$k$	$l$	$h_1$	$h_2$	$h_3$	$m$	$\Delta$
GN.82057	GN 828-6-UB-10-AM	6	4.5	10	5.6	35	10	6	5	22	18
GN.82059	GN 828-6-UB-15-AM	6	4.5	10	5.6	35	15	6	5	22	23
GN.82061	GN 828-6-UB-20-AM	6	4.5	10	5.6	35	20	6	5	22	28
GN.82077	GN 828-8-UB-15-AM	8	5.5	12	6.6	40	15	8	6	25	33
GN.82079	GN 828-8-UB-20-AM	8	5.5	12	6.6	40	20	8	6	25	39
GN.82081	GN 828-8-UB-30-AM	8	5.5	12	6.6	40	30	8	6	25	52
GN.82097	GN 828-10-UB-20-AM	10	6.5	15	8.6	45	20	10	7.5	30	59
GN.82099	GN 828-10-UB-25-AM	10	6.5	15	8.6	45	25	10	7.5	30	68
GN.82101	GN 828-10-UB-35-AM	10	6.5	15	8.6	45	35	10	7.5	30	86